

35th ANNUAL

Franklin - Sterling

**MINERAL
EXHIBIT**

The Fluorescent Mineral Capital of the World

Sat. & Sun., Oct. 5th & 6th, 1991

Sponsored by

FRANKLIN MINERAL MUSEUM

FRANKLIN, NEW JERSEY

PRICE 50¢

STERLING HILL MINING COMPANY

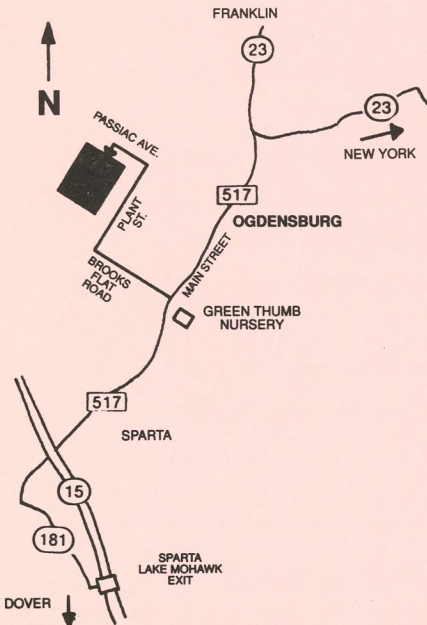
30 PLANT STREET
OGDENSBURG, N.J. 07439

Welcome
To
The Sterling Mine
In
Ogdensburg, N.J.



THE GATES ARE OPEN TO THE PUBLIC FOR A ONCE IN A LIFETIME, THRILLING OPPORTUNITY TO VISIT THE LAST OPERATING MINE IN NEW JERSEY! MANY ACTIVITIES ARE OFFERED SUCH AS A UNDERGROUND TOUR, SPECTACULAR FLUORESCENT MINERALS SHOWN IN PLACE, HISTORIC MINE BUILDINGS AND MUCH MORE!

VISIT OUR GIFT SHOP AND REFRESHMENT STAND. MODERN RESTROOM FACILITIES AND PARKING AVAILABLE. MOST AREAS ARE HANDICAP ACCESSIBLE. PICNIC AREAS ARE AVAILABLE.



ADMISSION

ADULT	\$6.50
CHILDREN (UNDER 12)	\$4.50
SENIOR CITIZEN	\$5.50

GROUP RATES

For 10 or more, reservations are required
for a \$1.00 discount per person

School Groups: Call for information

HOURS

OPEN 7 DAYS A WEEK

9 A.M. TO 5 P.M.

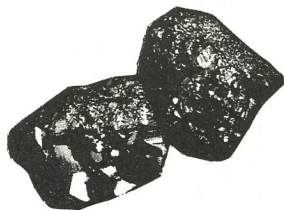
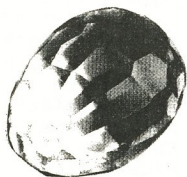
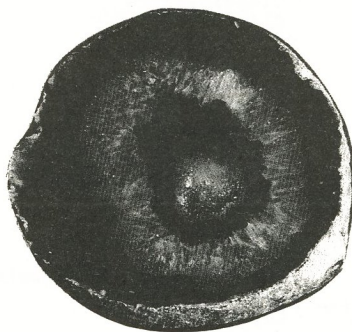
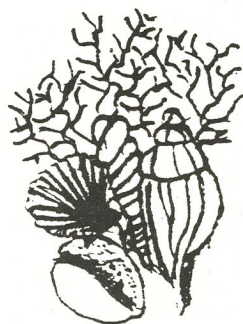
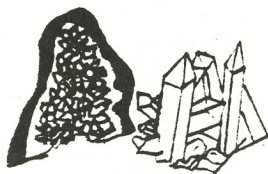
LAST TOUR AT 3:30 P.M.

Jacket or Sweater Recommended
Proper Footwear required

**For Information Call
(201) 209-7212**

Morton Hahn Inc.

Shells 🐚 Coral ★ Jewelry
Minerals and Fossils



P.O. Box 328, Dover, N.J. 07802 — (201) 625-1764
Fax (201) 625-5195

The FRANKLIN-STERLING HILL MINERALS

Compiled from various sources by John L. Baum, Curator of the Franklin Mineral Museum, July 1991 following the nomenclature of the *1987 Glossary of Mineral Species*, and with special thanks to Dr. Pete J. Dunn.

Acanthite	Cahnite	Fayalite
Actinolite	Calcite	Feitknechtite
Adamite	Canavesite	Ferrimolybdite
Adelite	Carrollite	Ferristilpnomelane
Aegirine	Caryopillite	Ferroaxinite
Akrochordite	Celestine	Flinkite
Albite	Celsian	Fluckite
Allactite	Cerussite	Fluoborite
Allanite-(Ce)	Chabazite	Fluorapatite
Alleghanyite	Chalcocite	Fluorapophyllite
Almandine	Chalcophanite	Fluorite
Analcime	Chalcopyrite	Forsterite
Anandite	Chamosite	Franklinfurnaceite
Anatase	Charlesite	Franklinite
Andradite	Chlorophoenicite	Friedelite
Anglesite	Chondrodite	
Anhydrite	Chrysocolla	Gageite-1Tc
Annabergite	Cianciulliite	Gageite-2M
Anorthite	Clinocllore	Gahnite
Anorthoclase	Clinochrysoile	Galena
Antlerite	Clinoclase	Ganomalite
Aragonite	Clinohedrite	Ganophyllite
Arsenic	Clinohumite	Genthelvite
Arseniosiderite	Clinozoisite	Gersdorffite
Arsenopyrite	Clintonite	Gerstmannite
Atacamite	Conichalcite	Glaucochroite
Augite	Connellite	Goethite
Aurichalcite	Copper	Gold
Aurorite	Corundum	Goldmanite
Austinite	Covellite	Graphite
Azurite	Cryptomelane	Greenockite
	Cuprite	Grossular
Bakerite	Cuprostibite	Grouite
Bannisterite	Cuspidine	Guerinite
Barite		Gypsum
Barium-pharmacosiderite	Datolite	
Barylite	Descloizite	Haidingerite
Barysilite	Devilline	Halotrichite
Bassanite	Digenite	Hancockite
Bastnaesite-group mineral	Diopside	Hardystonite
Baumhauerite	Djurleite	Hastingsite
Bementite	Dolomite	Hauckite
Berthierite	Domeykite	Hausmannite
Biotite	Dravite	Hawleyite
Birnessite	Dypingite	Hedenbergite
Bornite		Hedyphane
Bostwickite	Edenite	Hematite
Brandtite	Epidote	Hematolite-like-mineral
Breithauptite	Epsomite	Hemimorphite
Brochantite	Erythrite	Hendricksite
Brookite	Esperite	Hercynite
Brucite	Euchroite	Hetaerolite
Bultfonteinite	Eveite	Heulandite
Bustamite		

Hexahydrate	Minehillite	Scorodite
Hodgkinsonite	Molybdenite	Seligmannite
Holdenite	Monohydrocalcite	Sepiolite
Huebnerite	Mooreite	Serpierite
Humite	Muscovite	Siderite
Hyalophane		Sillimanite
Hydrohetaerolite	Nasonite	Silver
Hydrotalcite	Natrolite	Sjogrenite
Hydroxyapophyllite	Nelenite	Skutterudite
Hydrozincite	Neotocite	Smithsonite
	Niahite	Sonolite
Illite	Newberyite	Spessartine
Ilmenite	Nickeline	Sphalerite
	Nontronite	Spinel
Jacobsite	Norbergite	Starkeyite
Jarosewichite		Sterlinghillite
Jerrygibbsite	Ogdensburgite	Stibnite
Johannsenite	Ojuelaite	Stilbite
Johnbaumite	Orthochrysolite	Stilpnomelane
Junitoite	Orthoclase	Stilpnomelane (Mn-dominant)
	Orthoserpierite	Strontianite
Kaolinite	Otavite	Sulfur
Kentrolite	Oyelite-like mineral	Sussexite
Kittatinnyite		Svabite
Koettigite	Parabrandtite	Synadelphite
Kolicite	Pararammelsbergite	
Kraisslite	Parasymplesite	Talc
Kutnohorite	Pargasite	Tennantite
	Pectolite	Tephroite
Larsenite	Pennantite	Thomsonite
Laumontite	Petedunnite	Thorite
Lawsonbauerite	Pharmacolite	Thortveitite
Lead	Pharmacosiderite	Tilasite
Legrandite	Phlogopite	Tirodite
Lennilenapeite	Picropharmacolite	Titanite
Leucophoenicite	Pimelite	Todorokite
Linarite	Powellite	Torreyite
Liroconite	Prehnite	Tremolite
Lizardite	Pumpellyite-(Mg)	Turneaureite
Loellingite	Pyrite	
Loseyite	Pyroaurite	Uraninite
	Pyrobelonite	Uranophane
Magnesiohornblende	Pyrochroite	Uranospinite
Magnesoriebeckite	Pyrophanite	Uvite
Magnesium-chlorophoenicite	Pyroxmangite	
Magnetite	Pyrrhotite	Vesuvianite
Magnussonite		Villyaellenite
Malachite	Quartz	
Manganaxinite		Walkkildellite
Manganberzeliite	Rammelsbergite	Wawayandaite
Manganese-hoernesite	Realgar	Wendwilsonite
Manganhumite	Retzian - (La)	Willemite
Manganite	Retzian - (Nd)	Wollastonite
Manganosite	Rhodochrosite	Woodruffite
Manganpyrosmalite	Rhodonite	Wulfenite
Marcasite	Riebeckite	Wurtzite
Margarite	Roebingite	
Margarosanite	Romeite	Xonotlite
Marialite	Rosasite*	Yeatmanite
Marsturite	Roweite	Yukonite
Mcallisterite	Rutile	
Mcgovernite		Zinalsite
Meionite	Safflorite	Zincite
Melanterite*	Sarkinite	Zinkenite
Meta-ankoleite	Sauconite	Zircon
Metalodevite	Schallerite	Znucalite
Metazeunerite	Scheelite	
Microcline	Schorl	
Mimetite	Sclarite	

* reported but not confirmed with certainty.

Fluorescent Minerals of Franklin and Sterling Hill, N. J.

A 1991 CHECK-LIST BASED ON OBSERVATIONS BY RICHARD C. BOSTWICK

FL = fluoresces; PH = phosphoresces; SW = shortwave ultraviolet radiation;

LW = longwave ultraviolet radiation

These descriptions are necessarily brief and hence simplistic. the ultraviolet wavelength (SW or LW) listed with a fluorescent response is the wavelength for which the response is stronger; many listed minerals fluoresce under both LW and SW. Unusual fluorescent responses are listed in parentheses. Fluorescent intensity and subtle differences in hue are not mentioned.

While mineral fluorescence is a powerful tool for rapid mineral identification, it should be used in conjunction with other identification techniques.

Albite: FL red SW	Fluorapatite: FL orange or blue SW (FL "peach" SW)
Aragonite: FL, PH cream LW (FL green SW)	Fluorapophyllite: FL, PH white SW
Barite: FL cream SW (FL tan SW, green LW)	Fluorite: FL, PH blue-green SW, LW or FL violet LW
Barylite: FL violet SW, conspicuous under iron arc	Guerinite: FL white SW
Bassanite: FL, PH violet SW	Gypsum: FL pale blue or cream SW
Bustamite: FL red LW	Hardystonite: FL violet SW
Cahnite: FL cream SW	Hedyphane: FL cream or orange SW
Calcite: FL red w/ red-orange PH (FL pink, orange, cream, green, blue, yellow, violet, etc.)	Hemimorphite: FL, PH white LW (FL green SW)
Canavasite: FL, PH violet LW	Hodgkinsonite: FL deep red LW
Celestine: FL cream LW (FL violet SW)	Hyalophane" FL red SW
Cerussite: FL yellow LW	Hydrocalcite: FL cream LW
Chabazite: FL green SW	Hydroxyapophyllite: FL, PH weak white SW
Charlesite" FL pale blue SW, but coated with cream-FL gypsum	Hydrozincite: FL blue SW
Chondrodite: FL yellow SW	Johnbaumite: FL orange SW
Clinohedrite: FL, PH orange SW	Junitoite: FL pale yellow LW
Corundum: FL deep red LW	Magnesio-hornblende: FL pale greenish- blue SW
Cuspidine: FL orange-yellow SW w/ brief orange-red PH	Manganaxinite: FL red SW
Datolite: FL cream SW	Margarite: FL blue SW
Diopside: FL blue SW, cream LW	Margarosanite: FL blue & red SW (FL orange LW)
Dypingite: FL, PH blue SW, LW	Marialite: FL yellow SW, pink LW
Epsomite: FL cream LW	Mcallisterite: FL cream SW
Esperite: FL lemon-yellow SW	Meionite: FL pinkish-red SW (FL pink, orange, yellow, etc.)
Fluoborite: FL cream SW	Meta-ankoleite: FL green SW
	Metalodevite: FL green SW

Microcline: FL blue or red SW	Svabite: FL orange SW
Minehillite: FL violet SW	Talc: FL cream LW
Monohydrocalcite: FL green SW	Thomsonite: FL cream SW
Nasonite: FL pale yellow SW	Tilasite: FL yellow SW
Newberyite: FL cream SW	Titanite: FL yellow-orange SW
Norbergite: FL yellow SW	Tremolite: FL blue SW (FL yellow LW)
Oyelite-like mineral: FL violet & white SW	Turneaureite: FL orange SW
Pargasite: FL pale greenish-blue SW	Uranospinite: FL green SW
Pectolite: FL, PH orange SW	Uvite: FL yellow SW
Phlogopite: FL yellow SW	Willemite: FL, PH green SW. Also FL, PH yellow, greenish-yellow, orange.
Picropharmacolite: FL white LW	Wollastonite: FL, PH orange to yellow SW
Powellite: FL yellow SW	Xonotlite: FL violet SW
Prehnite: FL pinkish orange SW	Zincite: FL yellow LW
Quartz: yellow or green SW	Zircon: FL orange SW
Roebbingite: FL red w/ red-orange PH SW	Znucalite: FL green SW
Scheelite: FL yellow or blue SW	
Smithsonite: FL, PH white SW	
Sphalerite: FL, PH LW orange, blue, yellow-orange or orange- yellow	



*In Grateful Appreciation to
Wilfred R. Welsh*

For the donation of his lifetime collection of Franklin and world-wide minerals, fossils, and native American Indian artifacts. Bill Welsh with his wife Mary, spent many hundreds of hours at the Museum, unpacking, identifying and properly displaying this extensive collection in the display cases and racks that he also donated. Today visitors to the Museum can enjoy the Welsh collections which have added tremendous value and interest to the already famous Franklin Mineral Museum.

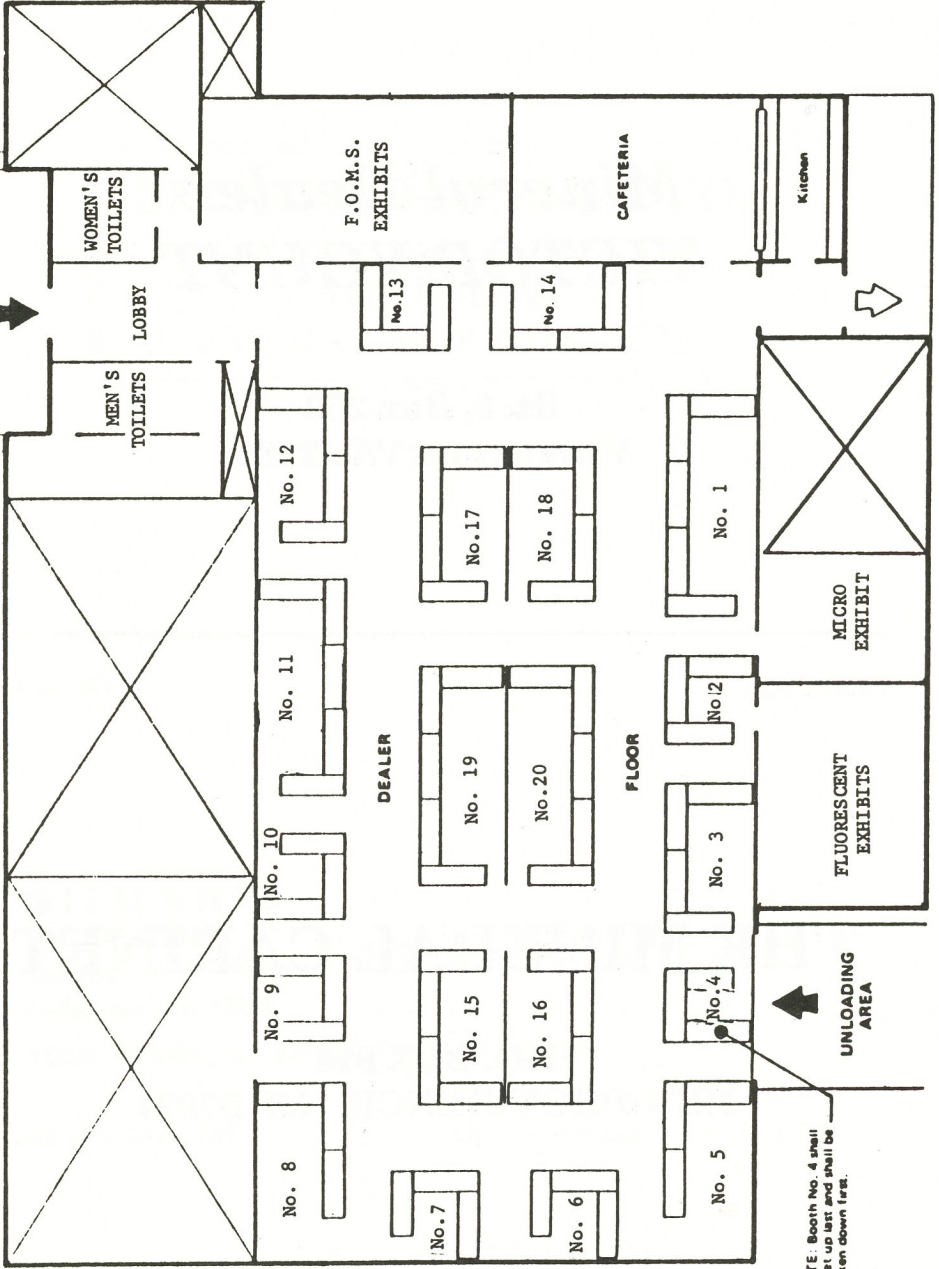
Minerals Unique To Franklin and Sterling Hill

BOSTWICKITE	$\text{CaMn}^{3+}_6\text{Si}_3\text{O}_{16} \cdot 7\text{H}_2\text{O}$
CHARLESITE	$\text{Ca}_6(\text{Al}, \text{Si})_2(\text{SO}_4)_2[\text{B}(\text{OH})_4](\text{OH})_{12} \cdot 26\text{H}_2\text{O}$
CHLOROPHOENICITE	$\text{Mn}_3\text{Zn}_2(\text{OH})_6[\text{As}_{0.5}\text{H}_{0.5}(\text{O}, \text{OH})_3]_2$
CIANCIULLIITE	$\text{Mn}(\text{Mg}, \text{Mn})_2\text{Zn}_2(\text{OH})_{10} \cdot 2 \cdot 4\text{H}_2\text{O}$
FRANKLINFURNACEITE	$\text{Ca}_2\text{Fe}^{3+}\text{Mn}^{2+}_3\text{Mn}^{3+}\text{Zn}_2\text{Si}_2\text{O}_{10}(\text{OH})_8 \cdot$
GERSTMANNITE	$(\text{Mg}, \text{Mn})_2\text{ZnSiO}_4(\text{OH})_2$
HANCOCKITE	$(\text{Pb}, \text{Ca}, \text{Sr})_2(\text{Al}, \text{Fe}^{3+})_3(\text{SiO}_4)_3(\text{OH})$
HARDYSTONITE	$\text{Ca}_2\text{ZnSi}_2\text{O}_7$
HAUCKITE	$(\text{Mn}, \text{Mg})_{24}\text{Zn}_{18}\text{Fe}^{3+}_3(\text{SO}_4)_4(\text{CO}_3)_2(\text{OH})_{81}$
HENDRICKSITE	$\text{K}(\text{Zn}, \text{Mg})_3\text{Si}_3\text{AlO}_{10}(\text{OH})_2$
HODGKINSONITE	$\text{Zn}_2\text{Mn}(\text{SiO}_4)(\text{OH})_2$
HOLDENITE	$(\text{Mn}, \text{Mg})_6\text{Zn}_3(\text{OH})_8(\text{AsO}_4)_2(\text{SiO}_4)$
JAROSEWICHITE	$\text{Mn}_2\text{Mn}^{3+}(\text{AsO}_4)(\text{OH})_6$
JOHNBAUMITE	$\text{Ca}_5(\text{AsO}_4)_3(\text{OH})$
KITTATINNYITE	$\text{Ca}_4\text{Mn}^{3+}_4\text{Mn}^{2+}_2\text{Si}_4\text{O}_{16}(\text{OH})_{8 \cdot 18}\text{H}_2\text{O}$
KOLICITE	$\text{Mn}_7\text{Zn}_4(\text{AsO}_4)_2(\text{SiO}_4)_2(\text{OH})_8$
KRAISSLITE	$\text{Fe}^{3+}_2\text{Mg}_4\text{Mn}_{44}\text{Zn}_6(\text{AsO}_4)_6(\text{AsO}_3)_4(\text{SiO}_4)_{12}(\text{OH})_{36}$
LAWSONBAUERITE	$(\text{Mn}, \text{Mg})_9\text{Zn}_4(\text{SO}_4)_2(\text{OH})_{22} \cdot 8\text{H}_2\text{O}$
LENNILENAPEITE	$\text{K}_{6-7}(\text{Mg}, \text{Mn}, \text{Zn}, \text{Fe})_{48}(\text{Si}, \text{Al})_{72}(\text{O}, \text{OH})_{216} \cdot 16\text{H}_2\text{O}$
MAGNESIUM-CHLOROPHOENICITE	$(\text{Mg}, \text{Mn})_3\text{Zn}_2(\text{OH})_6[\text{As}_{0.5}\text{H}_{0.5}(\text{O}, \text{OH})_3]_2$
MCGOVERNITE	$(\text{Mn}, \text{Mg}, \text{Zn})_{273}\text{As}^{3+}_{\sim 12}\text{As}^{5+}_{\sim 30}\text{Si}_{\sim 42}\text{O}_{324}(\text{OH})_{252}$
MINEHILLITE	$\text{K}_{2-3}\text{Ca}_{28}[\text{Zn}_4\text{Al}_4\text{Si}_{40}\text{O}_{112}(\text{OH})_4]_4(\text{OH})_{12}$
MOOREITE	$\text{Mg}_9\text{Mn}_2\text{Zn}_4(\text{SO}_4)_2(\text{OH})_{26} \cdot 8\text{H}_2\text{O}$
NELENITE	$\text{Mn}_{16}\text{Si}_{12}\text{O}_{30}(\text{OH})_{14}[\text{As}^{3+}_3\text{O}_6(\text{OH})_3]$
PARABRANDTITE	$\text{Ca}_2\text{Mg}(\text{AsO}_4)_2 \cdot 2\text{H}_2\text{O}$
PETEDUNNITE	$\text{CaZnSi}_2\text{O}_6$
RETZIAN - (La)	$\text{Mn}_2\text{La}(\text{AsO}_4)(\text{OH})_4$
RETZIAN - (Nd)	$\text{Mn}_2\text{Nd}(\text{AsO}_4)(\text{OH})_4$
SCLARITE	$(\text{Zn}, \text{Mn}, \text{Mg})_4\text{Zn}_3(\text{CO}_3)_2(\text{OH})_{10}$
STERLINGHILLITE	$\text{Mn}_3(\text{AsO}_4)_2 \cdot 4\text{H}_2\text{O}$
TORREYITE	$(\text{Mg}, \text{Mn})_9\text{Zn}_4(\text{SO}_4)_2(\text{OH})_{22} \cdot 8\text{H}_2\text{O}$
WALKKILLDELLITE	$\text{Ca}_4\text{Mn}^{2+}_6\text{As}^{5+}_4\text{O}_{16}(\text{OH})_{8 \cdot 18}\text{H}_2\text{O}$
WAWAYANDAITE	$\text{Ca}_{12}\text{Mn}_4\text{B}_2\text{Be}_{18}\text{Si}_{12}\text{O}_{46}(\text{OH}, \text{Cl})_{30}$
YEATMANITE	$[\text{Mn}_5\text{Sb}_2][\text{Mn}_2\text{Zn}_8\text{Si}_4]\text{O}_{28}$

FRANKLIN-STERLING HILL MINERAL SHOW
 National Guard Armory • Franklin, New Jersey

1983

MAIN ENTRANCE



Scale: 1/16" = 1'-0"

Drill Floor 60' X 120'

BUS PICK-UPS

Booth #1

Mineral Dealer
VICTOR YOUNT

Rt. 3, Box 250
Warrenton, VA 22186

Booth #2

THE MINERAL CABINET

P.O. BOX 814
NEW PROVIDENCE, N.J. 07974

Booth #3

EXCALIBUR MINERAL CO.

5 LOUIS LANE
CRUGERS, NEW YORK 10521

Booth #5

GILMAN'S

"AT THE CAVE"

Box 103

Hellertown, Pa. 18055

YOUR COMPLETE LAPIDARY SUPPLY HOUSE

Phone 215/838-8767

Open every day 9 a.m. to 8:00 p.m.

Booth #7

J & P Minerals

P.O. Box 846
Germantown, MD 20874

Booth #8

Mineral Dealer
AKE ANDERSON

31 Prospect Street
Huntington, New York 11743

Booth #9

The Treasury Room

Stuart and Donna Wilensky

MINERAL VIDEO

VOL. II: OUR FINEST SPECIMENS

****ALL NEW MINERALS!**

Our finest minerals on full color professional video. Top quality collector display specimens priced from \$25 to \$5,000, Miniature to Lg. Cabinet. Relax and enjoy a "Museum" of minerals on your own TV . . . All of them for sale!

Send \$7.50 (\$5.00 tape deposit + \$2.50 postage) and we'll refund the \$5.00 when tape is returned.

Stuart & Donna Wilensky
P.O. Box 386, Sullivan St.
Wurtsboro, NY 12790
(914) 888-4411 (Shop) (914) 695-1550 (Home)
(914) 888-2889 (Fax)

If you're in our area please call for a visit to our shop, The Treasury Room, with over 500 minerals on display.

Booth #10

S.T.D. MINERAL CO.

*22 Spring Hill Road
Hyde Park, MA 02134-4013*



Booth #11

Fowler's Wire Wrapping

**P.O. Box 199
Goochland, VA 23063**

Booth #12

Aurora Mineral Corp.

**16 Niagara Avenue
Freeport, New York 11520**

Booth #13



The Gemmery of Palm Coast

JOHN AND JULIANNA WITHEY

**25 Lansdowne Lane • Palm Coast, FL 32037
(904) 445-9030**

Booth #14

Amazon Imports
P.O. Box 58
Williston, New York 11596



MEMORIUM

Since he loved and
collected minerals from
Franklin-Ogdensburg

On this special weekend

we remember

HOWARD BELSKY

(1958-1987)

CHARLOTTE & MEL

BELSKY

HOWARD MINERALS

Booth #16

Ring Sizing - Gem Stone Set

The Jewelry Depot

14Kt Gold & Silver
Finished Jewelry - Mounts & Findings
Precious & Semi-Precious Stones

P.O. Box 512
Northfield, Ohio 44067

Donna & Jerry
(216) 467-6241

Booth #17

DAVID M. CRAWFORD

Fine Mineral Specimens

Purveyor of Fine Minerals Since 1968

1808 Harlem Blvd.
Rockford, IL 61103

By Appointment
(815) 962-5286

Booth #18

Willis' Earth Treasures

Fine Mineral Specimens - Jewelry

Dick & Joyce Willis
(201) 859-0643

116 Prospect St.
Stewartsville, NJ 08886

Booth #19

The Rocksmiths
P.O. Box 157
Tombstone, Arizona 85638

Booth #20

Martin's Minerals

P.O. Box 160
Highspire, PA 17034

Please patronize our advertisers...

We appreciate their support!

JOLLY PIZZA

FULL VARIETY MENU - FULL LIQUOR BAR

Open

Mon. - Sat.: 11 AM - 11 PM

Sun: Noon - 11 PM

ALL MAJOR CREDIT CARDS ACCEPTED
CONVENIENT - ACROSS FROM THE ARMORY

27 ROUTE 23, FRANKLIN, NJ

(201) 827-6565

We Are Looking Forward to Seeing You At The

FRANKLIN DINER
JACK and JOYCE CARROLL

ROUTE 23

FRANKLIN, N. J.

(201) 827-2627



BUY - SELL
Bob's Collectables

BASEBALL CARDS
COMICS - ADV. GAMING
SPECIALIZING IN TOBACCO CARDS

M-W-F 12-8:30
SAT-SUN 9-5
OR BY APPOINTMENT

99 RT. 23 NORTH
HAMBURG, N.J.



100 Route 23
Franklin, N.J. 07416
827-8200



61 Sparta Avenue
Sparta, N.J. 07871
729-3141



A Complete Family Bookstore
Wide Selection of Books on Gems & Minerals

FRANKLIN BOOKSHOP

284 Highway 23
Franklin, NJ 07416

(201) 827-7243

PAM LAUBENTHAL, Owner

Tel. 827-7670

HAMBURG HARDWARE CO.

HARDWARE—ELECTRICAL SUPPLIES
PLUMBING SUPPLIES—DE VOE PAINT

The Old Fashion Store With Personalize Service

1 MAIN STREET

HAMBURG, N. J.



(201) 827-6085

PRO-CUTTERS

HAIR DESIGNERS

282 Rt. 23, Franklin, New Jersey 07416

**THE HOBBY SHOP
IN SUSSEX**

69 MAIN STREET

(201) 875-8580

GOOD COFFEE

NJ LOTTERY

RICHARDS

THE FOUNTAIN AT THE FOUNTAIN

71 MAIN STREET
SUSSEX, NJ 07461
(201) 875-5160

MARY A. MEZGER, PROP.

BAKERY

NEWSPAPERS

In Appreciation

THE FRANKLIN MINERAL MUSEUM

Expresses its thanks to the Mineral Show Exhibitors,
Dealers, and Advertisers and to all, who through
their dedication have contributed their time and
talents to make the Mineral Show a great success.

WILCOX PRESS

Letterpress & Offset Printing

Serving Sussex County For Over 65 Years

- Letterheads
- Envelopes
- NCR Forms
- Business Cards
- Menus
- Wedding & Party Announcements
- Flyers, Booklets & Books
- Raffle Tickets
- Photocopies
- Bumper Stickers
- Tricky Tray Tickets

**WE ARE MORE
THAN JUST A PRINTER!**

"FROM AN ERASER TO A COMPLETELY FURNISHED OFFICE."

**WE HAVE ONE OF THE LARGEST
SELECTIONS OF OFFICE SUPPLIES
IN SUSSEX COUNTY**

NOT JUST TODAY... BUT EVERYDAY! NOT JUST THIS MONTH...

10% DISCOUNT
ON MOST OFFICE SUPPLIES & EQUIPMENT

(201) 827-7474

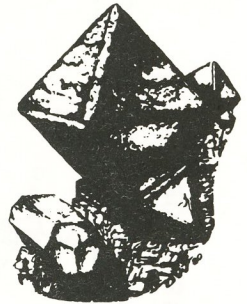
6 MAIN STREET, HAMBURG, NJ

MON - FRI 8:00 to 5:00 • SATURDAY 9:00 to 12:00

Annual Franklin-Sterling Hill Mineral Show

EXHIBITORS

JOHN L. BAUM - Reg. & Fl. Exhibit
DR. PHILIP BETANCOURT - Reg. & Fl. Exhibit
MICHAEL BETANCOURT
RICHARD C. BOSTWICK - Fl. Exhibit
JOE CILEN
JIM CHENARD
ED DAVID
JOHN EBNER - Micro Exhibit
GEORGE ELLING - Reg. & Fl. Exhibit
GARY GRENIER
RICHARD & ELNA HAUCK
JOHN KOLIC
BILL KROTH - Reg. & Fl. Exhibit
DR. STEVE M. KUITEMS - Reg. & Fl. Exhibit
RAY LATAWIEC
MARK LEGER - Reg. & Fl. Exhibit
CHESTER & MARY BRIDGETTE LEMANSKI - Reg. & Fl. Exhibit
LEE LOWELL
PETE MACKEY - Reg. & Fl. Exhibit
DR. WARREN MILLER - Fl. Exhibit
STEVE MISIUR - Reg. & Fl. Exhibit
HUGH RONEMUS - Reg. & Fl. Exhibit
STEVE SANFORD - Reg. & Fl. Exhibit
HENRY VAN LENTEN - Fl. Exhibit
EARL VERBEEK - Fl. Exhibit
DAVE WELLBROCK
HERB YEATES



INSTITUTIONS

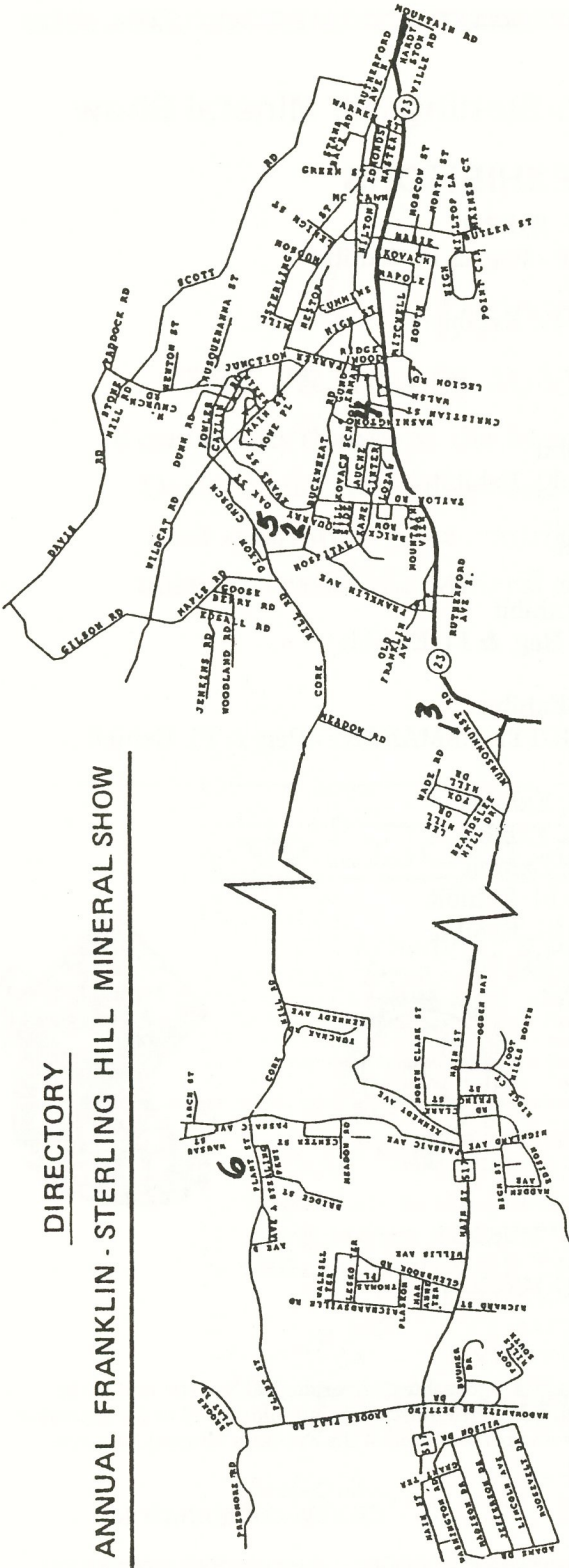
HARVARD UNIVERSITY GEOLOGICAL MUSEUM
MORRIS MUSEUM
RUTGERS UNIVERSITY GEOLOGICAL MUSEUM
STERLING HILL MINING COMPANY
FRANKLIN MINERAL MUSEUM INC.

Special thanks to all exhibitors, the Franklin-Ogdensburg Mineralogical Society, and to the Staff and Board of Trustees of the Franklin Mineral Museum. Your efforts add to the success of the Franklin-Ogdensburg Mineral Show and perpetuation of the Franklin Mineral Museum.

John Cianciulli
EXHIBIT COORDINATOR

DIRECTORY

ANNUAL FRANKLIN - STERLING HILL MINERAL SHOW

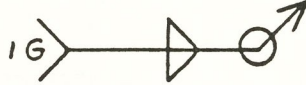


FRANKLIN

- 1 - The ARMORY - dealers & exhibits
- 2 - Franklin Mineral Museum & Mine Replica
- 3 - The ARMORY - rock swap
- 4 - Gerstmann Mineral Museum
- 5 - Buckwheat Mineral Dump - collecting
- 6 - Sterling Hill Mine & Museum tour & collecting

OGDENSBURG

914-856-6384



Precision Metalcraft

PRECISION
WELDING & FABRICATION

ROY FREDERICKS

180 JERSEY AVE.
PORT JERVIS, NY 12771

HAMBURG PLUMBING SUPPLY CO., INC.

WHOLESALE PLUMBING & HEATING SUPPLIES

RT. #23 SOUTH & PRINCE ST.
HAMBURG, N. J. 07419

201 - 827-2553

Mon-Fri 7:00-5:30

Sat 8:00-2:00

Open Eves: Tues & Thurs till 8:00 PM

Visit Our Newly

Remodeled Showroom

SPEAKERS



This gem and mineral show can be even more enjoyable if you budget your time so that you can hear the guest speakers during your visit to this "beehive of activity" at the Franklin Armory. If your purse strings need a rest, chances are that your feet need a rest too. Let the speakers raise your aspiration level before you return to your favorite exhibits and favorite dealers.

Saturday, October 5
1:00 p.m.

PETER B. LEAVENS
"Metamorphism and Metamorphic Minerals of the Franklin and Sterling Hill orebodies."

Sunday, October 6
2:00 p.m.

RICHARD C. BOSTWICK
"Mineral Finds at Sterling Hill 1989-1991"

THE THIRTEENTH ANNUAL F.O.M.S. DINNER OCTOBER 5, 1991 DON'T MISS IT!

- The Place — The Lyceum Hall, The Immaculate Conception Church, 75 Church Street, Franklin, New Jersey (about 5 minutes by auto from the Franklin Armory, site of the 34rd Franklin-Sterling Mineral Exhibit).
- The Time — Social Hour begins at 6:30 p.m.; dinner begins at 7:00 p.m.
-

Franklin Mineral Museum's Endowment Fund and Building Fund

The Board of Trustees realized that the continued financial and educational success of the mineral museum was dependent upon two long term projects when they established an Endowment Fund and a Building Fund.

The Endowment Fund accepts monies from estates, trusts and the general public. Only the income from the Endowment Fund is used to operate the museum. The principal of the Endowment Fund is restructured from any distribution to museum support or expansions.

The Building Fund also accepts monies from estates, trusts and the general public for use in expansion and maintenance of its buildings. Monies received by the Building Fund are restructured for its stated purpose and not for general operations.

Donations to either of these funds can be made out to the Franklin Mineral Museum and mailed to P.O. Box 54, Franklin, New Jersey 07416. Please indicate which of the funds the donations is for if you have a preference.

The trustees sincerely appreciate your support of the permanent preservation of the mineral history of the zinc mines of Franklin, New Jersey.

All donations to the Endowment Fund and Building Fund are tax deductible.



Photo by ERNIE DUCK

THE FRANKLIN MINERAL MUSEUM and MINE REPLICA

See the World Famous Franklin Minerals, Mining History, Fluorescent Display and a true replica of the mining operations hundreds of feet below the surface of the Earth.

GREATER THAN EVER!

Recent additions to the displays are the Wilfred Welsh collections of worldwide minerals and rocks, fossils and Native American relics. These instructive exhibits represent a lifetime of selection by a dedicated educator and are housed in rooms designed expressly for their display.

SALES AREA: Mineral Lights, Specimens,
Souvenirs and Jewelry available.

NEW OPERATING SCHEDULE

SPRING (April 15 - June 30)* and **FALL** (Sept. 1 - Nov. 15)
Monday: Closed. Tues., Wed., Thurs.: Groups, by Reservation.
Fri. & Sat.: Open to Public 10 a.m. - 4 p.m.
Sunday: Open to Public 12:30 p.m. - 4:30 p.m.

SUMMER (July, Aug.): Mon., Tues.: Closed.
Wed. thru Sat.: Open to Public 10 a.m. - 4 p.m.
Sunday: Open to Public 12:30 p.m. - 4:30 p.m.

**Closed Easter*

Gifts and donations to the Museum are tax deductible.

6B Evans Street, Box 54, Franklin, N. J. 07416
(201) 827-3481

